



©2023 | ingl.jboon@CARE

CARE Tanzania Strategic Plan 2023 - 2028 Summary

CARE Strategic Plan 2023 - 2028

Mission & Vision

Our Mission

CARE works around the globe to save lives, defeat poverty, and achieve social justice.

Our Vision

We seek a world of hope, inclusion, and social justice, where poverty has been overcome and all people live with dignity and security.

Our Focus

We put women and girls in the center because we know that we cannot overcome poverty until all people have equal rights and opportunities.

Our Values

Transformation

We believe in urgent action, innovation, and the necessity of transformation—within the world and our own organization.

Integrity

We are accountable to the people and partners we humbly serve, transparently sharing our results, stories, and lessons.

Diversity

We know that by embracing differences, actively including a variety of voices, and joining together we can solve the world's most complex problems.

Excellence

We challenge ourselves to the highest level of learning and performance, tapping the best of the human spirit to create impact.

Equality

We believe in the equal value of every human being and the importance of respecting and honoring each individual; we know that change happens through people.

CARE Tanzania's History



CARE International has been present in Tanzania since April 1994 when CARE International established a temporary presence in response to the crisis in Ngora, Kagera region.

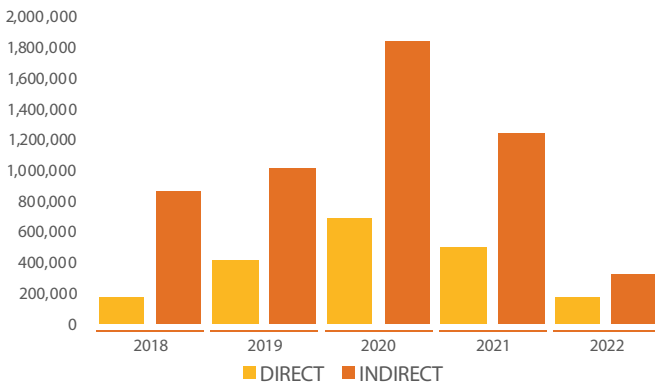
Since then, CARE Tanzania has had three long term strategic plans developed focusing on the following objectives:

- Tackling causes of poverty and social injustice (2004-2008)
- Focusing on rural women's and girls' empowerment. (2010-2014)
- Focusing on rural women empowerment through climate justice (2014-2020)

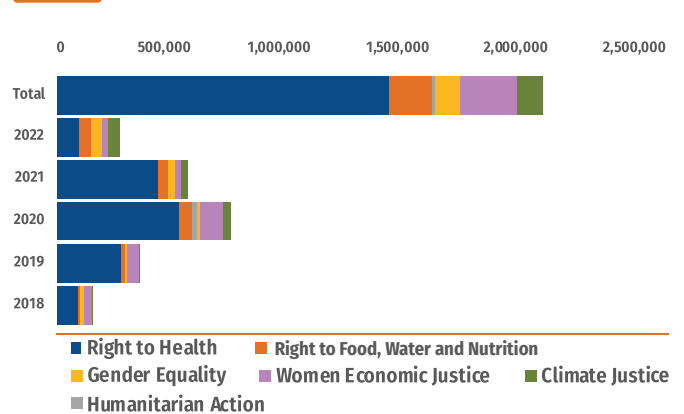


Our Impact

CARE Tanzania Reach



CARE Tanzania Direct Reach Per Impact Areas



Participants IMPACTED

Refers to all those individuals who, because of the materialization of the goals of a project or initiative, experience lasting change (impact or outcomes).

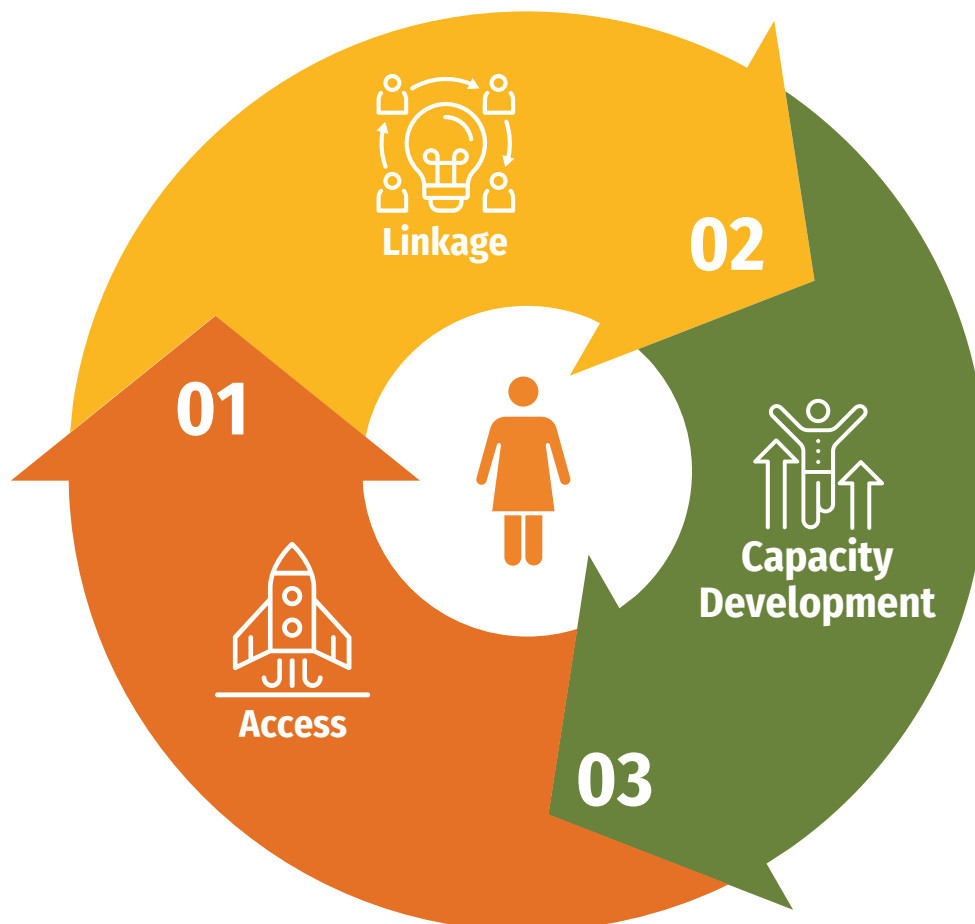
Underlying Causes of Poverty and Social Injustice

CARE Tanzania believes that through economic empowerment, women in Tanzania will unlock all milestones needed to achieve gender equality. CARE Tanzania believes that through promoting women's rights, financial inclusion, entrepreneurship and business development services then women in Tanzania will achieve economic liberation contributing positively to different levels of the economy.

Causes of Poverty in Tanzania

- Population vs Economic Growth Rate
- Access to Quality Education
- Life-threatening diseases
- Access to Clean Water and Sanitation
- Food Insecurity
- Infrastructural challenges
- Cultural norms and traditions
- Access to Justice
- Decline in Labor force

We believe that through promoting women's rights, financial inclusion, entrepreneurship and business development services then women in Tanzania will achieve economic liberation



Intended Impact Areas



**Women's
Economic
Justice**



**Right to
Health**



**Right to Food,
Water and
Nutrition**



**Gender
Equality**



**Climate
Justice**



**Crisis
Preparedness
& Response**

Targeted Impact Population

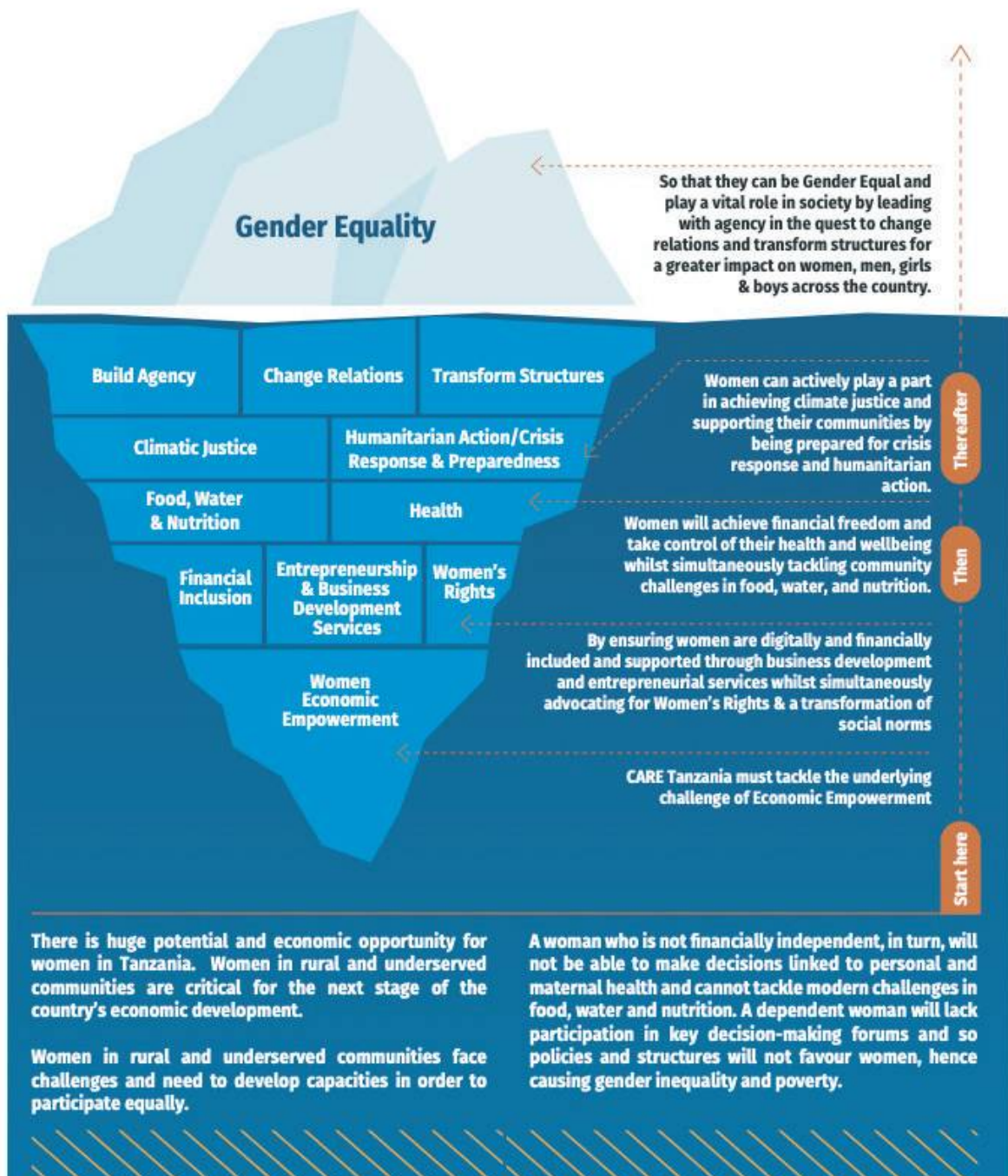
- Small-Scale producers and people dependent on natural resources in areas with severe environmental restrictions, especially women and girls
- Women and adolescent girls of reproductive age in rural and underserved areas (10-59 years of age)
- Young people in rural and underserved areas



CARE's Theory of Change



CARE Tanzania is focused on impacting women and young people in underserved communities with a specific approach of targeting women, we envisage a society where women play an equal role; confident and skilled living their lives through intimate relations and social networks that ensure policies, laws and social norms are transformed for a Gender Equal world.



Form of Presence



The Chomoka Social Enterprise

CARE International aspires to be a locally led and globally connected network that can multiply impact. A core element of this strategy is to leverage strong partnerships that are equitable and transparent.

CARE Tanzania intends to address this by setting up a separate entity that will operate as a Social Enterprise. This entity will open opportunities and allow for innovative means of approaching development. The local entity will allow for increased autonomy in ways of working and community engagement.

The new strategy seeks to explore alternative presence models (social enterprise & global affiliate models), which are different from the traditional presence model, to guarantee the future of CARE Tanzania.



Gears info:



Both CARE Tanzania and Chomoka Global will raise funds from various sources. This will expand sources of funding to include both traditional donors and private sector players



Chomoka Tanzania will continue to operate as a private entity with a dotted line to Chomoka Global. Chomoka Tanzania will continue to work closely with CARE Tanzania at times receiving funds as a secondary applicant through CARE Tanzania









CARE Tanzania will continue to build strong and strategic partnerships with local NGOs, CSOs and beneficiaries. Care Tanzania will also directly engage CSOs on programs that support implementation through a locally led implementing partners network.



Through VSLA leads, Chomoka enterprise will impact the entire VSLA Groups that include women and young people through capacity development. The model aims to turn a targeted group composed of women, girls, and men in underserved communities into partners and expand engagement through small private entities. The aim is to transform communities alleviating them from poverty.

Financial Projections

Our ambition is to re-establish a more stable/long-term program portfolio that has a good proportion of funding from all our focus areas. To achieve this, we need to strengthen our relations with our current funders/donors, CARE USA funding teams, CMPs, and look for new opportunities from in country bilateral funding agencies and the private sector.

Funding Projection per Impact Area	USD	
	FY23 - FY27	%
 Gender Equality	2,442,473.64	21%
 Women's Economic Justice	1,809,489.29	15%
 Humanitarian Action	976,030.68	9%
 Right to Health	1,452,069.55	12%
 Right to Food Water & Nutrition	1,378,169.55	12%
 Climatic Justice	3,631,815.19	31%



Strategic Milestones

2022

Strategic Plan Completed



2023



- Programmatic Strategies (Operation plan) finalised
- Stakeholder mapping and Partnership Strategy finalised
- Resource Mobilisation plan completed
- Systems & Controls Strengthen- CARE & partners
- MEAL (Monitoring, Evaluation Accountability and Learning) Plan finalised
- Communication & Advocacy Strategy completed and operational
- Programs reviewed and aligned to the Pragmatic Strategy
- Disaster Preparedness plan finalised
- CARE Staff successfully onboarded to the strategy and pragmatic plans.

2024

- CARE future structure, strategic objectives & roles completed & approved (CHOMOKA social enterprise)
- Registration and onboarding of the Social Enterprise completed
- Systems & Controls Strengthen- CARE & CHOMOKA Enterprises
- Stakeholders onboarding - Private Sector, iNGOs etc.
- Official launch of the CHOMOKAs Social Enterprise
- Partnership strategy successfully implemented
- Partner agreements (MOU) signed
- Funding streams diversified and increased
- M&E successfully completed



2025



- Mid-term Programmatic plan review (identify successes, challenges and reflect on lessons learnt)
- Objectives and Pathways successfully updated, and teams onboarded
- Stakeholders onboarding and communication - Public sector, Private Sector, iNGOs etc.
- Reviewed programmatic plan successfully implemented

2026

- VLSAs (Empowered women network) registration significantly increased
- More strategic partners onboarded to CHOMOKA
- Technical & Financial benefits successfully flow to and from VSLAs through the CHOMOKA Enterprise



2027



- Thought leadership - publications and convened events
- Successful closeout of the strategy with relevant stakeholders
- Final Strategy review & new strategy design
- Completion and Communication of the new strategy

2028





CARE Tanzania
Ruhinde Street Plot 175B,
Upper Kinondoni
P.O. Box 10242
Dar Es Salaam,
Tanzania

+255 22 2668 061
TZACAREHQ@care.org

www.care-tanzania.org